



Kajaria **INFINITY**

Glazed Vitrified Tiles

600 x 1200 mm



SUPER PREMIUM POLISHED
PREMIUM POLISHED
POLISHED
PREMIUM MATT
MATT



INTRODUCING

KAJARIA INFINITY

600 x 1200 mm

MAGNIFYING THE BEAUTY OF OUR WORLD

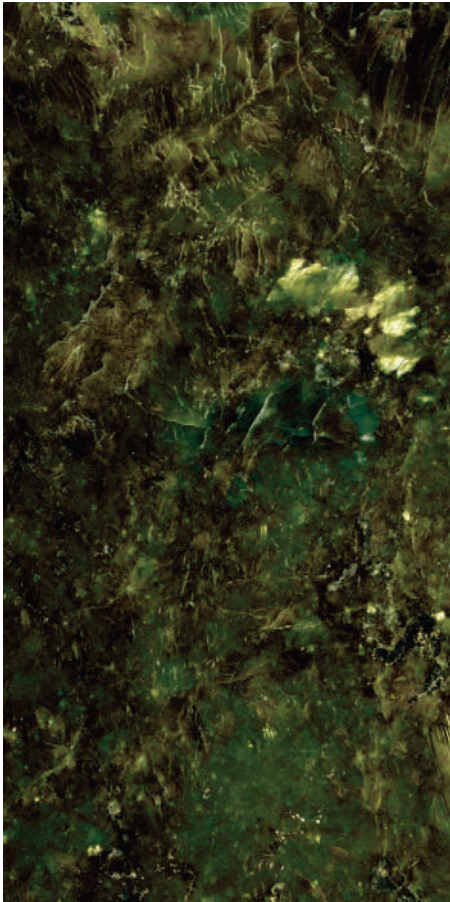
Kajaria Infinity 600x1200 mm tiles combine elegance and engineering into a truly smooth and expansive feeling for every surface. Their lofty impression needs to be experienced first-hand to be appreciated with a spectrum of designs to create an elevated aura of sophistication in every space. Their timeless beauty is designed for durability, with features to make maintenance a hassle-free experience

600 x 1200 mm

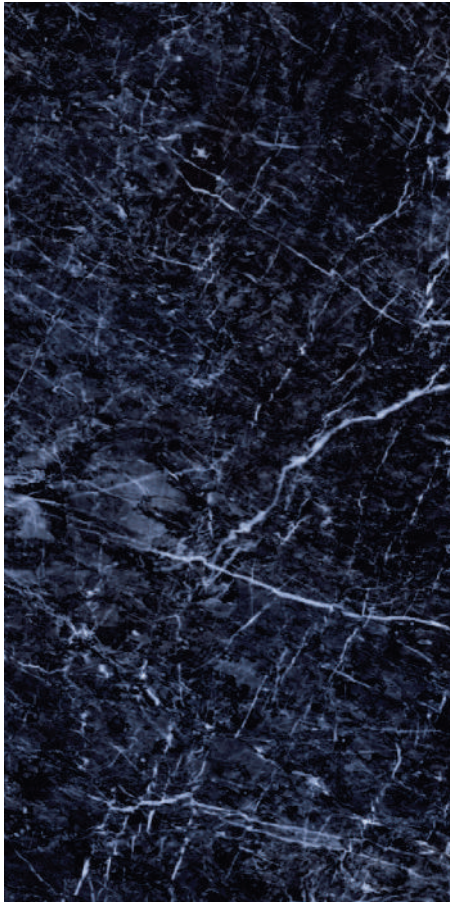
Kajaria
INFINITY
Glazed Vitrified Tiles



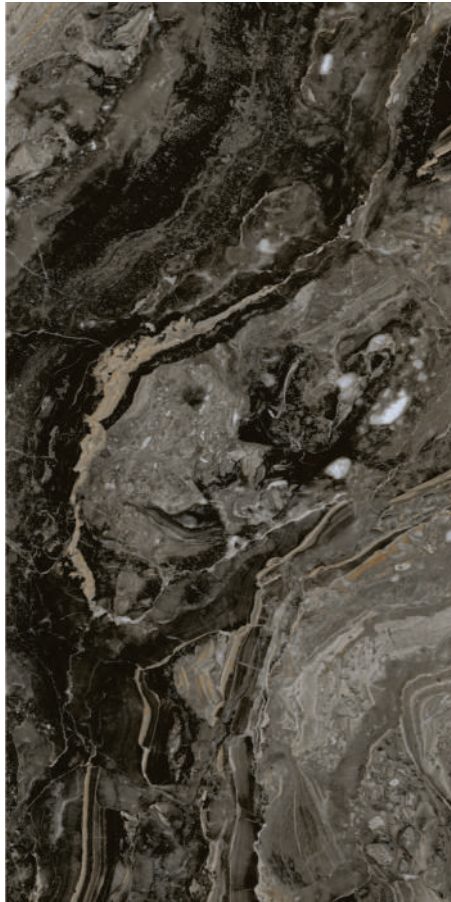
600 x 1200 mm



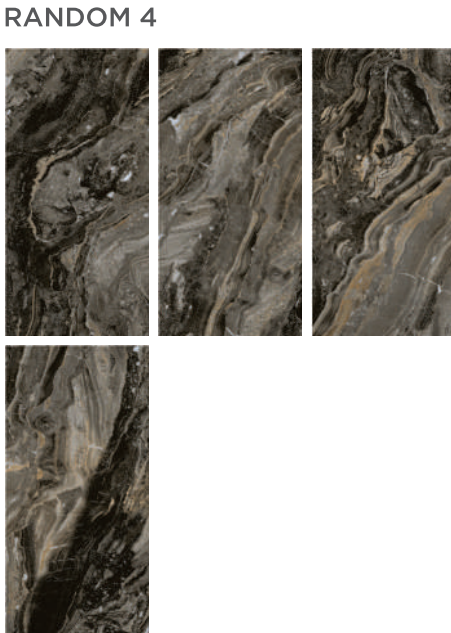
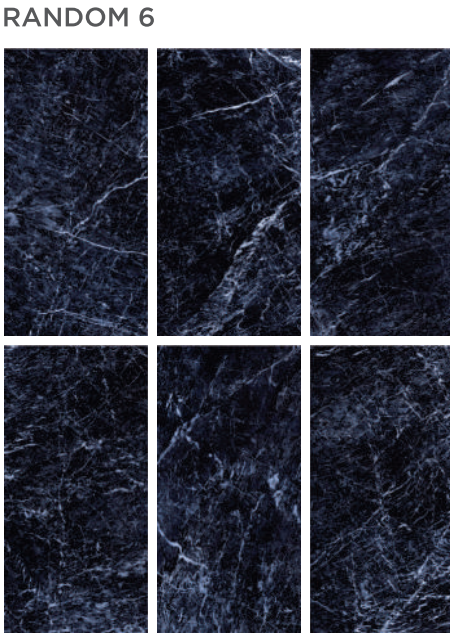
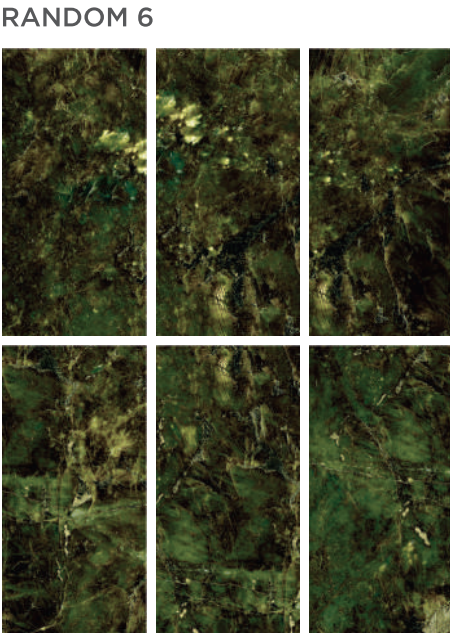
IRISH VERDE SUPER PREMIUM POLISHED



NEBULA AZUL PREMIUM POLISHED



ARENA NOIR PREMIUM POLISHED



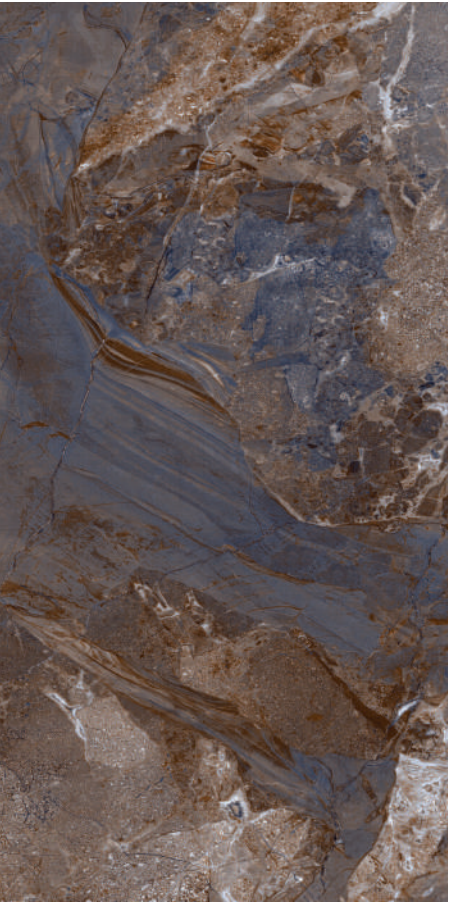
600 x 1200 mm



TIFFANY BEIGE PREMIUM POLISHED

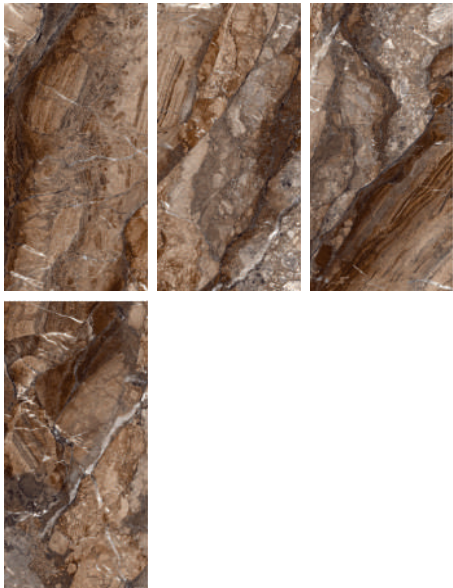


ARSON BRONZE PREMIUM POLISHED

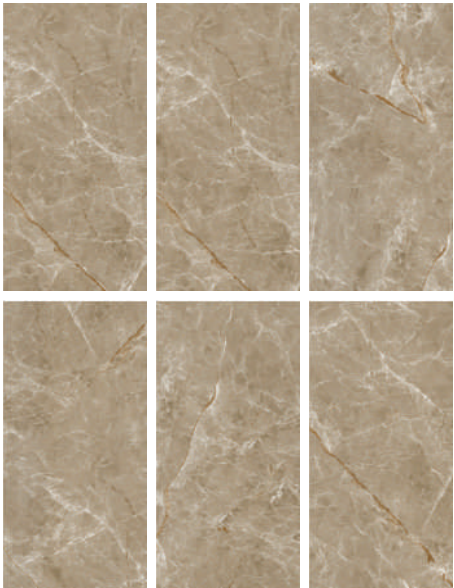


BRECCIA AZUL PREMIUM POLISHED

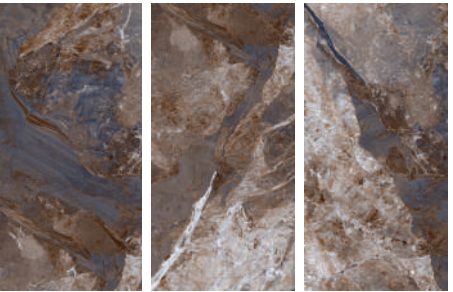
RANDOM 4



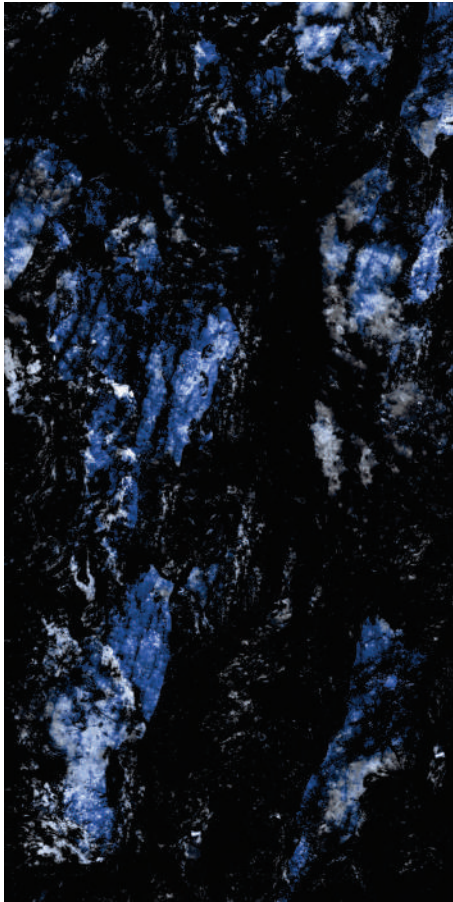
RANDOM 6



RANDOM 3



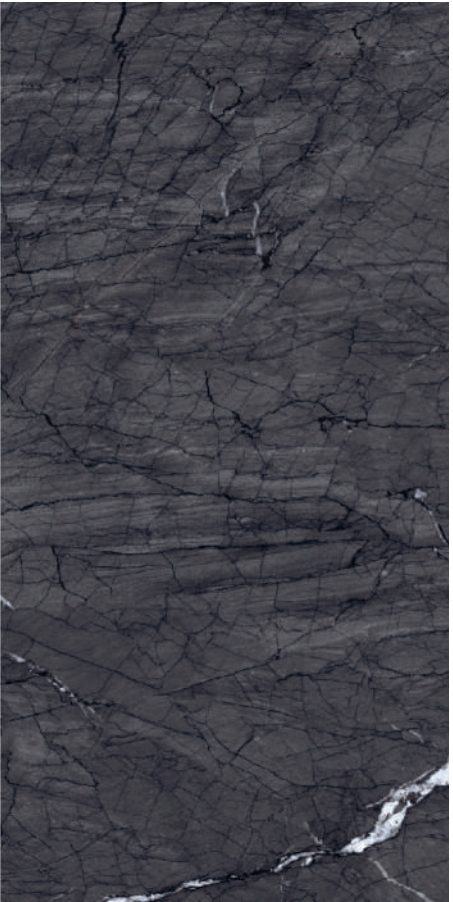
600 x 1200 mm



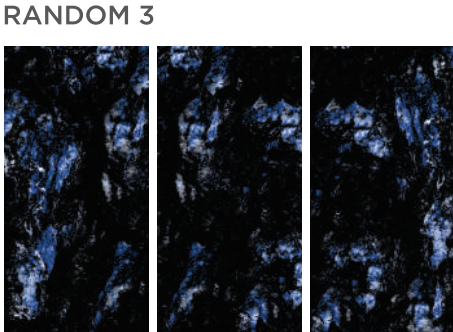
VOLGA BLUE **PREMIUM POLISHED**



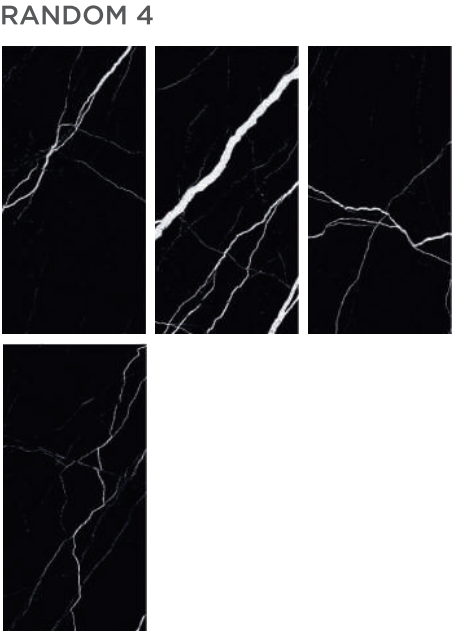
IMPRESSION GRIS **PREMIUM POLISHED**



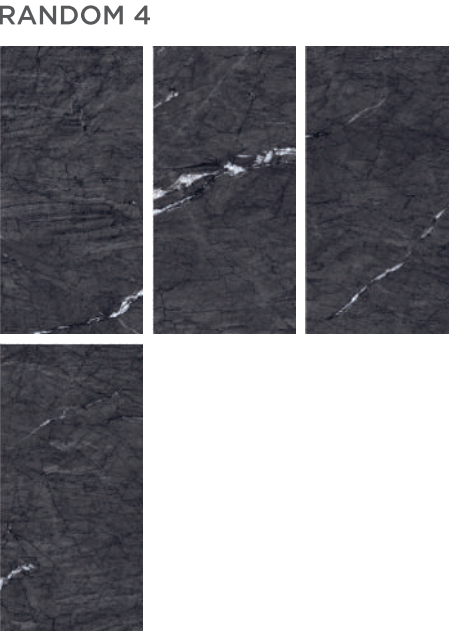
DELTA BLACK **PREMIUM POLISHED**



RANDOM 3



RANDOM 4



RANDOM 4

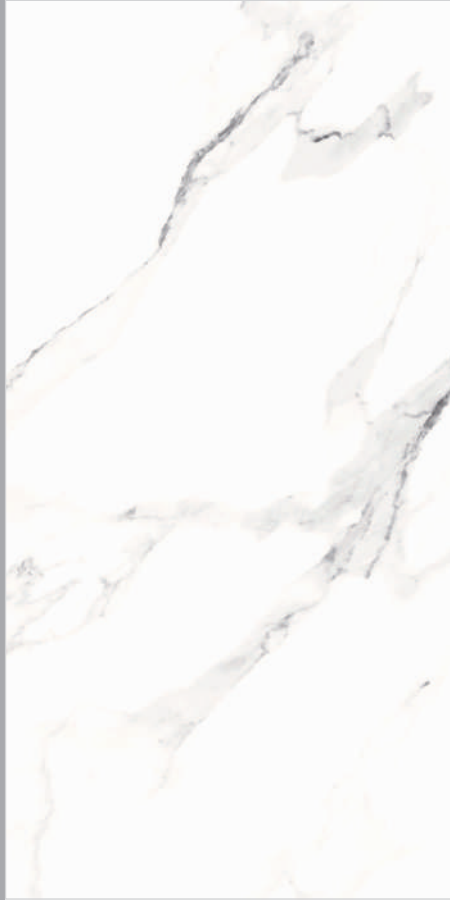


BLACK DELTA | PREMIUM POLISHED

600 x 1200 mm



BIANCO LASA POLISHED



SATUARIO ROMA POLISHED



CALACATTA ROMA POLISHED

RANDOM 6



RANDOM 6

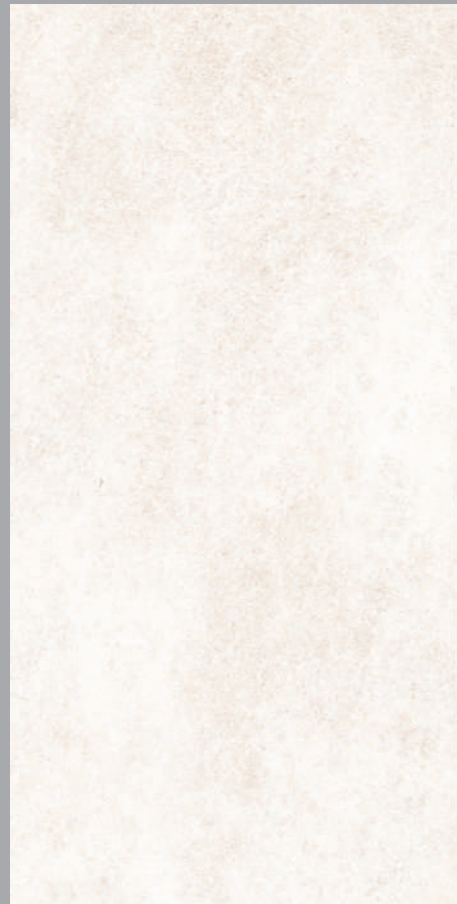


RANDOM 6

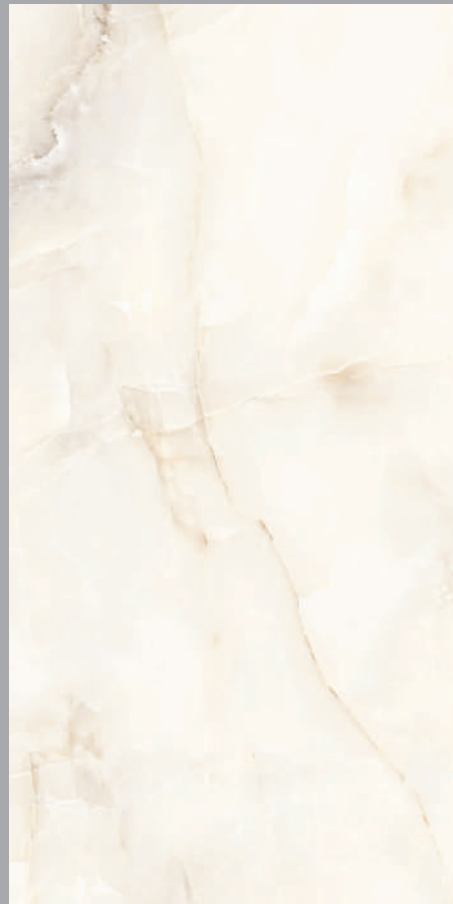


SATUARIO ROMA | POLISHED

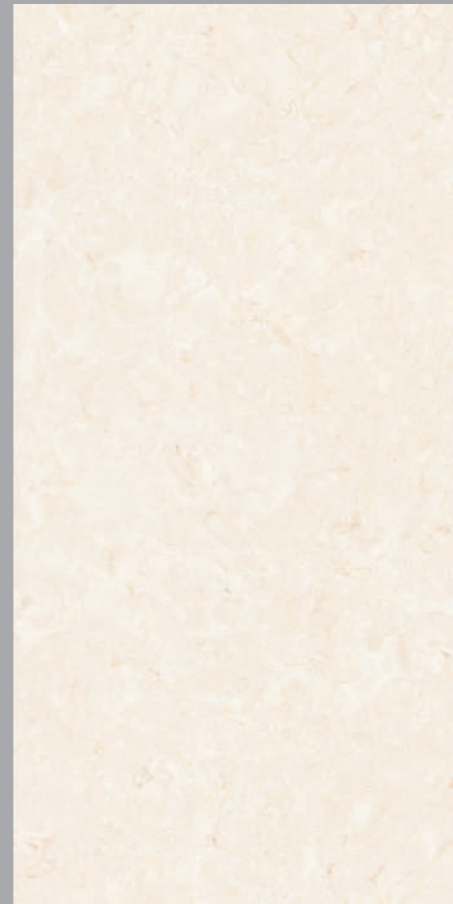
600 x 1200 mm



ARESTO CREMA POLISHED



LUCID BIANCO POLISHED

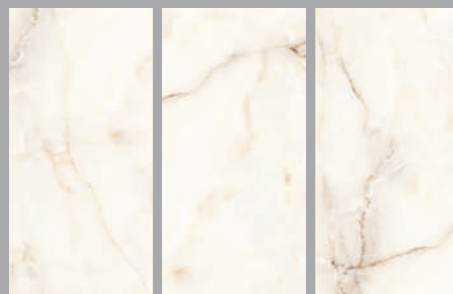


JASPER BEIGE POLISHED

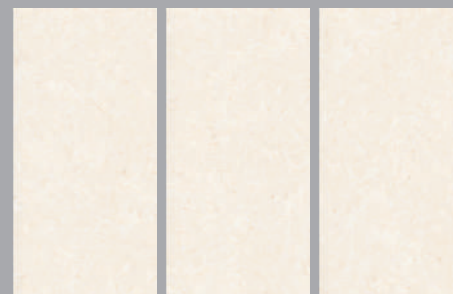
RANDOM 3



RANDOM 3



RANDOM 4



JASPER BEIGE | POLISHED

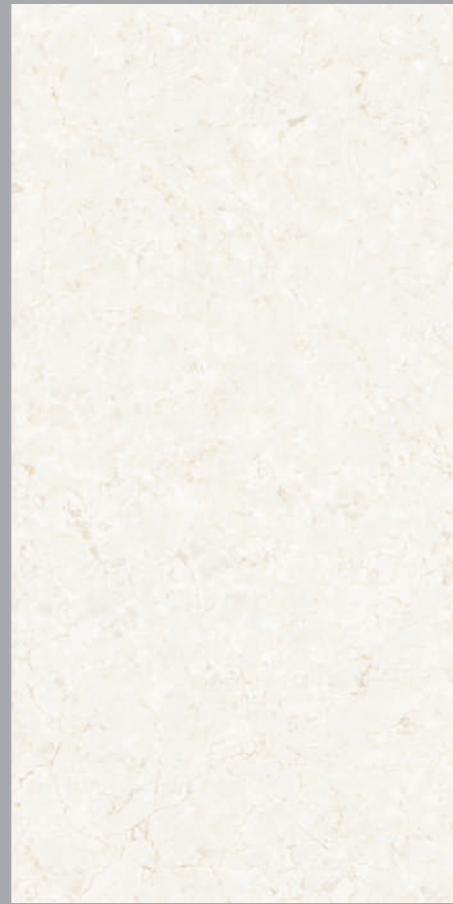
600 x 1200 mm



GRACE BEIGE POLISHED



LARSEN CREMA POLISHED



BLEND IVORY POLISHED

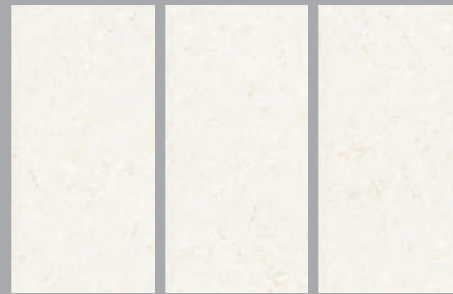
RANDOM 4



RANDOM 4



RANDOM 4



600 x 1200 mm



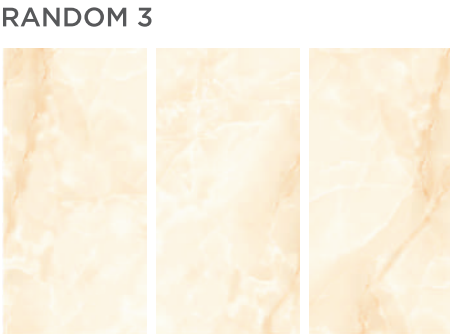
ONYX BEIGE POLISHED



PERINO BEIGE POLISHED



WILSON BEIGE POLISHED



WILSON BEIGE | POLISHED

600 x 1200 mm



TRAVERTINO CREMA POLISHED



ALBERTA BEIGE POLISHED



LOREAL BRONZE POLISHED

RANDOM 2



RANDOM 6



RANDOM 6



LOREAL BRONZE | POLISHED

600 x 1200 mm



MARMOL BROWN POLISHED



STREAM TAUPE POLISHED



SOVO BEIGE POLISHED



SOVO BEIGE | POLISHED

600 x 1200 mm



MILAN GREY POLISHED

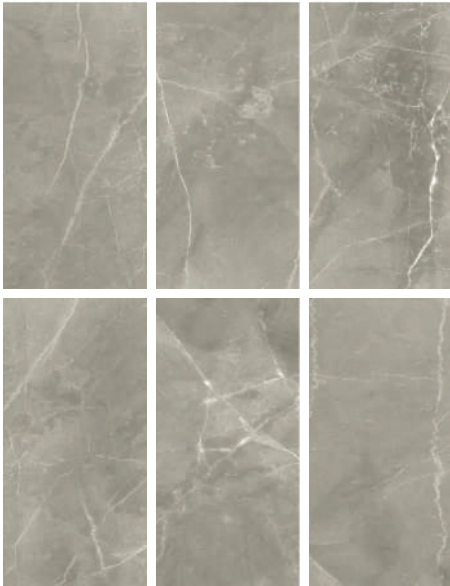


HALTON GREY POLISHED



MOON GREY POLISHED

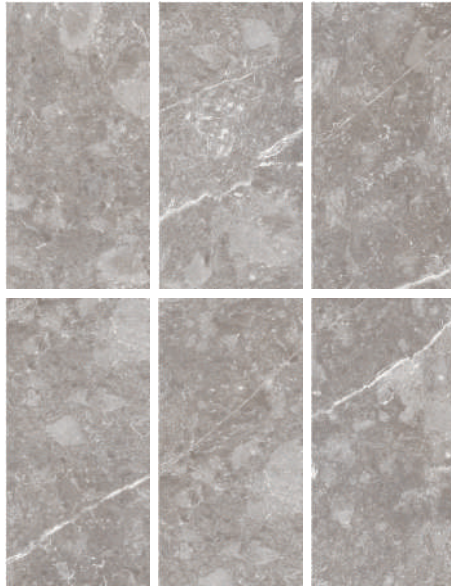
RANDOM 6



RANDOM 6



RANDOM 6



MOON GREY | POLISHED

600 x 1200 mm



ARMANI GRIGIO POLISHED



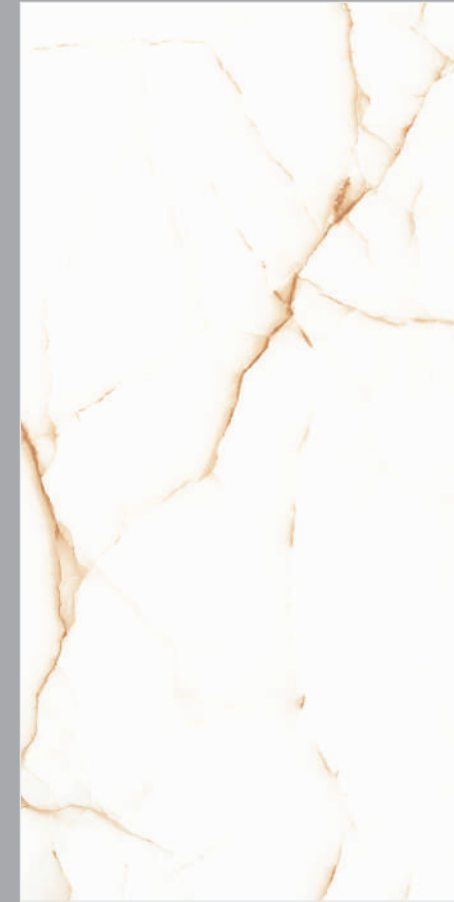
CRAFT ASH POLISHED



CRAFT MARFIL POLISHED



ANTICO GREY POLISHED

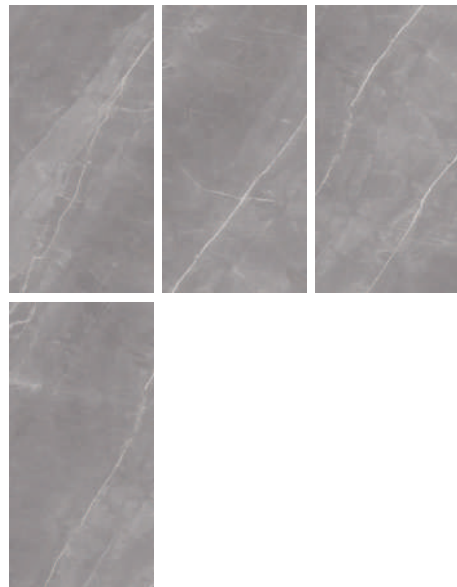


ONYX CREMA POLISHED



ONYX PEARL POLISHED

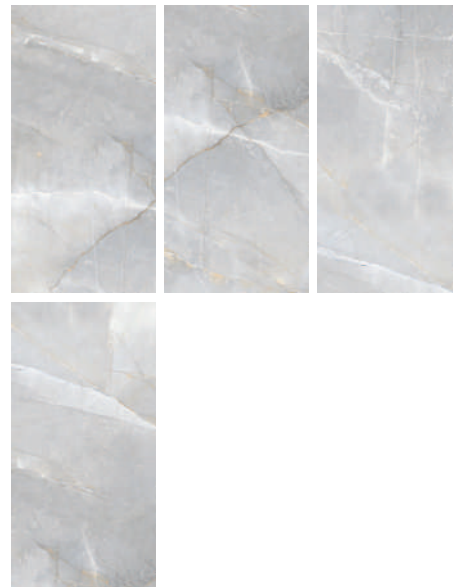
RANDOM 4



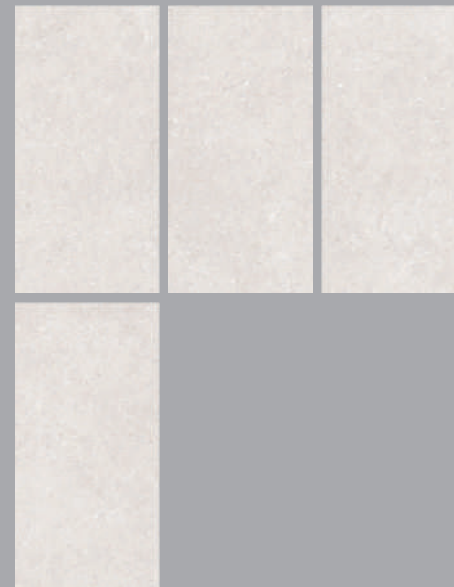
RANDOM 4



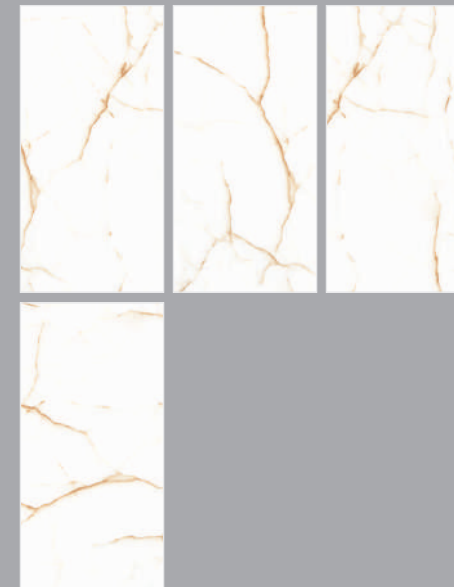
RANDOM 4



RANDOM 4



RANDOM 4



RANDOM 3



600 x 1200 mm



CALACATTA ROMA CARVING PREMIUM MATT

RANDOM 6



600 x 1200 mm



**BRECCIA VATICAN
CARVING**

**PREMIUM
MATT**



**MARMOL BROWN
CARVING**

**PREMIUM
MATT**



**STREAM TAUPE
CARVING**

**PREMIUM
MATT**

RANDOM 6



RANDOM 4



RANDOM 6



BRECCIA VATICAN CARVING | PREMIUM MATT

600 x 1200 mm



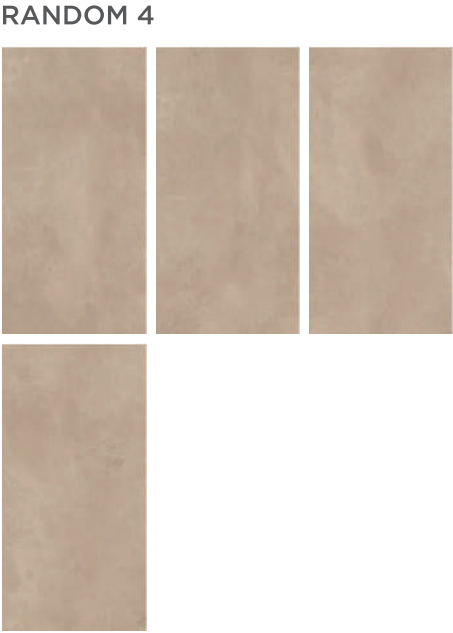
DAZZLE TAUPE MATT



DAZZLE GREY MATT



DAZZLE MARFIL MATT



PACKING DETAILS

Dimensions mm	No of Slabs / Box	Coverage Area
600X1200	03	2.16 M ²

TECHNICAL SPECIFICATIONS

S.No	Technical Characteristics	* IS 15622:2017, *EN 14411:2016 & ISO 13006:2018 Group B1a (Annex G) Standard's Requirement	Kajaria Infinity tile's Specifications	Test method
1.	Deviation in length & width	± 0.1 % ± 0.6 %/ ± 0.3 %	± 0.10 %	IS 13630-1 EN ISO 10545-2
2.	Deviation in thickness	± 5.0 %	± 5.00 %	IS 13630-1 EN ISO 10545-2
3.	Deviation in Straightness of sides	± 0.1 % ± 0.5 %/± 0.3 %	± 0.10 %	IS 13630-1 EN ISO 10545-2
4.	Deviation in Rectangularity	± 0.1 % ± 0.5 %/± 0.3 %	± 0.10 %	IS 13630-1 EN ISO 10545-2
5.	Deviation in Surface Flatness	± 0.5 % ± 0.5 %/± 0.4 %	± 0.15 %	IS 13630-1 EN ISO 10545-2
6.	Surface quality	95% of the tiles shall be free from visible defects	95% of the tiles shall be free from visible defects	IS 13630-1 EN ISO 10545-2
7.	Modulus of rupture	Avg. 35 N/mm ² , individual Min 32 N/mm ²	≥ 40 N/mm ²	IS 13630-6 / EN ISO 10545-4
8.	Breaking strength	Minimum 1300 N	≥ 2000 N	IS 13630-6 / EN ISO 10545-4
9.	Bulk Density	Minimum 2.20 g/cc	≥ 2.25 g/cc	IS 13630-2
10.	Glossiness	Manufacture to state the class	Min 5 for Rustic/Matt/Satin Finish Min 90 for Polish Finish	Glossimeter 60 degrees
11.	Water Absorption	≤ 0.08 %, Individual Max 0.1% ≤ 0.5 %, Individual Max. 0.6 %	≤ 0.08 % Individual Max 0.1%	IS 13630-2 / EN ISO 10545-3
12.	Resistance to surface abrasion of Glazed tiles	Minimum Class II Report abrasion class and cycles passed	PEI-Class III to Class IV	IS 13630-11 EN ISO 10545-7
13.	Thermal expansion from ambient temperature to 100 °C	Test method available	6x10 ⁻⁶ K ⁻¹ Maximum	IS 13630-4 EN ISO 10545-8
14.	Thermal shock resistance	10 cycles Minimum Test method available	10 cycles Minimum	IS 13630-5 EN ISO 10545-9
15.	Moisture expansion	Maximum 0.02 Millimeter/Metre Test method available	Nil	IS 13630-3 EN ISO 10545-10
16.	Crazing resistance (Glazed Tiles)	Passes 4 cycles at 7.5 kg/cm ² Required	Passes 4 cycles at 7.5 kg/cm ²	IS 13630-9 EN ISO 10545-11
17.	Frost resistance	Required	100 cycles Minimum	IS 13630-10 EN ISO 10545-12
18.	Resistance to Household Chemicals & Swimming Pool Salts #	Minimum Class AA Minimum GB	Minimum Class AA Minimum GB	IS 13630-8 EN ISO 10545-13
19.	Resistance to low & high concentration of acids & alkalis #	Manufacturer to state classification	Minimum Class AA Minimum GLB,GHB	IS 13630-8 EN ISO 10545-13
20.	Stain resistance**	Minimum Class 1 Minimum Class 3	Minimum Class 1 Minimum Class 3	IS 13630-8 EN ISO 10545-14
21.	Slipperiness	Test method available	≥ R-10 for Rustic/Matt/Satin Finish ≥ R-9 for Polish Finish	DIN 51130:2014
22.	Co-efficient of friction	Manufacture to state the class	≥ 0.32 for Rustic/Matt/Satin Finish > 0.20 for Polish Finish	ISO 10545-17
23.	Scratch hardness of surface(Moh's scale)	Minimum 5 Test method available	Min 6 for Rustic/Matt/Satin Finish Min 5 for Polish/Marbletech Finish	IS 13630-13 EN 101
24.	Impact Resistance	Minimum 0.55 Test method available	Min 0.55 & No identification of cracking	IS 13630-14 EN ISO 10545-5

Resistance to acids & alkalis (Exception of Hydrofluoric acid & its compounds)

** Vitrified tiles have resistance to most of the stains / chemicals but, it is recommended to take due care while laying and for day-to-day maintenance.

* Applicable in Gailpur plant only.

■ Colours in the catalogue are as accurate as printing process allows. Please check actual tile sample before making the final selection.

■ Sizes mentioned in the catalogue are nominal sizes only.

■ No claim will be entertained once the tiles are fixed.

■ For better laying, please follow the instructions on the packaging box.

■ In case it is required to lay the tiles on wall or floor in STAGGERED PATTERN, then always lay them in Overlap 20:80 ratio, as shown in VISUAL 1 instead of Brick pattern (overlap 50:50 ratio), as shown in VISUAL 2.

■ Please make sure to check the shade/finish with the sales agent/dealer before making the final purchase because there might be variation in actual finish and that shown in the catalogue. The company will not bear any loss in such case.



VISUAL 1



VISUAL 2

Kajaria

INFINITY

Glazed Vitrified Tiles

Kajaria
INFINITY

Glazed Vitrified Tiles

Toll Free No. : 1800 309 309

MARCH - 2023